

KIMOFIX[®]
fixing system solutions

Web
www.kimofix.com

Email
info@kimofix.com

Office Add
1001-1002, Building A, AUX-Orient Center, 518Xinmei Rd, Ningbo, China

Factory Add
No.27. Zhushan Industry Zone. Yuyao City. Zhejiang Pro. CN

Bolts and Nuts

Feel the power of KIMOFIX

KBN-B001 Hanger Bolt

Applications:

The hanger bolt is good for wooden furniture jointing. Wood screw thread on one end and a machine screw thread on the other end.

Features:

Double ended screw are made of high quality carbon steel, smooth surface without burr, color galvanized surface, corrosion resistance, high strength, durable.



KBN-B002 Hanger Bolt

Applications:

The double ended screw is suitable for outdoor furniture, household furniture, stair post, wooden guardrail, solid wood furniture, custom furniture, and office furniture.

Features:

Carbon steel construction with zinc plated, high hardness, provides great corrosion resistance and antirust ability for long service life.



KBN-B003 Hanger Bolt

Applications:

The double ended screw is suitable for outdoor furniture, household furniture, stair post, wooden guardrail, solid wood furniture, custom furniture, and office furniture.

Features:

Carbon steel construction with zinc plated, high hardness, provides great corrosion resistance and antirust ability for long service life.



KBN-B004 Hanger Bolt

Applications:

The double ended screw is suitable for outdoor furniture, household furniture, stair post, wooden guardrail, solid wood furniture, custom furniture, and office furniture.

Features:

Carbon steel construction with zinc plated, high hardness, provides great corrosion resistance and antirust ability for long service life.



KBN-B005 Fully Threaded Rod

Applications:

The fully threaded rod is mainly Used for assembly fastening, screwing into threaded nuts or tapped holes., U-bolts or hangers as fixed accessories. Wide Used on stepping motor driving guide rail, machine tool, and other equipment.

Features:

Suitable for clamps, anchors, hangers and U-bolts or DIY projects that require continuous threading.



KBN-B006 Fully Threaded Hex Head Bolt

Applications:

Widely used in woodworking, fasteners of furniture and bed industry, garden equipment, pipe installation, joining lumber, machinery industry, automotive industry, construction, electronic industry and DIY projects, etc.

Features:

Provides strength and great protection from corrosions and tarnishing.



Size(mm)

6x	20	8x	25	8x	30	10x	45
6x	20	8x	25	8x	30	10x	45
6x	20	8x	25	8x	30	10x	45
6x	20	8x	25	8x	30	10x	45
6x	20	8x	25	8x	30	10x	45
6x	20	8x	25	8x	30	10x	45
6x	20	8x	25	8x	30	10x	45
6x	20	8x	25	8x	30	10x	45
6x	20	8x	25	8x	30	10x	45
6x	20	8x	25	8x	30	10x	45
6x	20	8x	25	8x	30	10x	45
6x	20	8x	25	8x	30	10x	45
6x	20	8x	25	8x	30	10x	45
6x	20	8x	25	8x	30	10x	45
6x	20	8x	25	8x	30	10x	45
6x	20	8x	25	8x	30	10x	45
6x	20	8x	25	8x	30	10x	45
6x	20	8x	25	8x	30	10x	45
6x	20	8x	25	8x	30	10x	45
6x	20	8x	25	8x	30	10x	45
6x	20	8x	25	8x	30	10x	45
6x	20	8x	25	8x	30	10x	45
6x	20	8x	25	8x	30	10x	45
6x	20	8x	25	8x	30	10x	45
6x	20	8x	25	8x	30	10x	45
6x	20	8x	25	8x	30	10x	45
6x	20	8x	25	8x	30	10x	45
6x	20	8x	25	8x	30	10x	45
6x	20	8x	25	8x	30	10x	45
6x	20	8x	25	8x	30	10x	45
6x	20	8x	25	8x	30	10x	45
6x	20	8x	25	8x	30	10x	45
6x	20	8x	25	8x	30	10x	45
6x	20	8x	25	8x	30	10x	45
6x	20	8x	25	8x	30	10x	45
6x	20	8x	25	8x	30	10x	45
6x	20	8x	25	8x	30	10x	45
6x	20	8x	25	8x	30	10x	45
6x	20	8x	25	8x	30	10x	45
6x	20	8x	25	8x	30	10x	45
6x	20	8x	25	8x	30	10x	45
6x	20	8x	25	8x	30	10x	45
6x	20	8x	25	8x	30	10x	45
6x	20	8x	25	8x	30	10x	45
6x	20	8x	25	8x	30	10x	45

KBN-B007 Fully Threaded Hex Head Bolt

Applications:

Widely used in woodworking, fasteners of furniture and bed industry, garden equipment, pipe installation, joining lumber, machinery industry, automotive industry, construction, electronic industry and DIY projects, etc.

Features:

Provides strength and great protection from corrosions and tarnishing.



KBN-B008 Partially Threaded Hex Head Bolt

Applications:

Hex screw bolt can be widely used in the home and office appliance, communication equipments, ship assembly and other machinery industry.

Features:

Provides strength and great protection from corrosions and tarnishing.



KBN-B009

Round Head Square Neck and Hex Nut

Applications:

Our universal round head square neck bolts and nuts are not only suitable for wheelbarrows, but can also be widely used in a variety of furniture. Whether it's a wooden bed frame, headboard, footboard, crib, cots, wagon, or table and chair, these bolts kit provide a stable and reliable connection.

Features:

Carriage bolts have a dome shaped head and a square neck generally requiring a hex nut and flat washer. The square neck makes them self-locking when used within a square hole.



KBN-B010

Round Head Square Neck and Hex Nut

Applications:

Our universal round head square neck bolts and nuts are not only suitable for wheelbarrows, but can also be widely used in a variety of furniture. Whether it's a wooden bed frame, headboard, footboard, crib, cots, wagon, or table and chair, these bolts kit provide a stable and reliable connection.

Features:

Carriage bolts have a dome shaped head and a square neck generally requiring a hex nut and flat washer. The square neck makes them self-locking when used within a square hole.



KBN-B011

Fully Threaded Flanged Hex Head Bolt

Applications:

bolt can be widely used in Construction & Infrastructure, Marine, Pipeline Systems, automotive industrial, car engine.

Features:

Hex flange design evenly spreads pressure, tension, and vibration forces across the joint, prevent damage to the surface being fastened and provide a more secure hold



KBN-B012

Pan Head Bolt

Applications:

Widely used in machinery, furniture, car, motorcycle repair, environmental protection equipment, 3D printing equipment, communication equipment, power facilities, electronic products, ship assembly, and DIY inventions, and more.

Features:

Excellent resistance to rust, corrosion, and oxidation for superior, long-lasting durability.



KBN-B013 Pan Head Bolt



Applications:

Widely used in machinery, furniture, car, motorcycle repair, environmental protection equipment, 3D printing equipment, communication equipment, power facilities, electronic products, ship assembly, and DIY inventions, and more.

Features:

Excellent resistance to rust, corrosion, and oxidation for superior, long-lasting durability.

KBN-B014 Pan Washer Head Bolt



Applications:

Engineered with precision, these machine screws guarantee accurate threading and steadfast fastening, suitable for both machinery and general applications.

Features:

The Phillips pan head design of these M6 machine screws ensures easy installation

KBN-B015 Slotted Cap Head Bolt

Applications:

Widely used in other minor repairs, such as cabinets, furniture, towel racks, faucets, door handles, lamps, doors and windows, knobs, etc.

Features:

Slotted drive has a linear slot for use with a flat-blade driver



KBN-B016 Pan Head Bolt

Applications:

Widely used in machinery, furniture, car, motorcycle repair, environmental protection equipment, 3D printing equipment, communication equipment, power facilities, electronic products, ship assembly, and DIY inventions, and more.

Features:

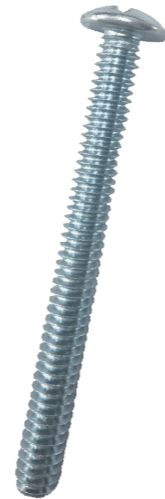
Excellent resistance to rust, corrosion, and oxidation for superior, long-lasting durability.



KBN-B017 Pan Head Bolt

Applications:

Slotted drive has a linear slot for use with a flat-blade driver



Features:

Pan head has a flat top and short vertical sides with a rounded top edge

KBN-B018 Steel Nickel

Tornillo doble para abrazaderas

Applications:

For installation with metal expansion plugs. Ideal for fixing in hollow materials, plaster, hollow brick, etc.



KBN-B019
Steel Nickel

Tornillo doble para abrazaderas

Applications:

For installation with metal expansion plugs. Ideal for fixing in hollow materials, plaster, hollow brick, etc.



KBN-N001
DIN 934 Hex Nut

Applications:

Our hex nut is superior to regular steel and any zinc plated fasteners, provides good strength and corrosion resistance in bad environments



Features:

Standard hex nuts screw onto male-threaded parts in non-locking applications
Compatible with most kinds of hand tool torque wrench or air ratchet

Size

M6(DIN934)

M8(DIN934)

M10(DIN934)

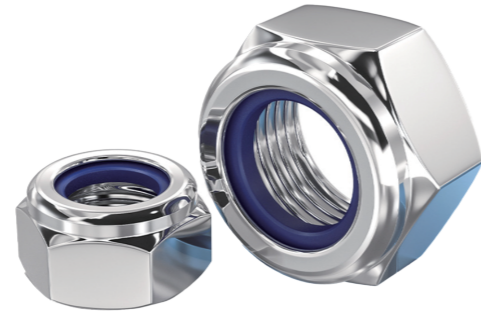
M12(DIN934)

M16(DIN934)

M20(DIN934)

KBN-N002

304 Stainless Steel Nylon Insert Lock Nut

**Applications:**

All lock nuts are made of stainless steel 304, provides good strength and corrosion resistance in bad environments. With a nylon insert inside, the lock nuts greatly reduce loosening under vibrations and torque.

Features:

Sturdy & Durable
Low Probability Of Looseness

KBN-N003

DIN6923 Serrated Flange Nut

**Applications:**

100% Made of high quality 304 stainless steel (also known as 18-8 or A2 stainless steel), they have good corrosion resistance, rust resistance and high hardness, which provides a longer service life, can be used indoor and outdoor, even in humid environment.

Features:

Flange works like a washer to distribute the load.
Serrations can help grip the material surface and prevent the nuts from loosening due to vibration.

KBN-N004
DIN6334
Hexagonal Long Nut



Applications:

Rod Coupling Nut features a six-sided design for maximum torque and easy grip. Used to fully connect two fasteners or fittings (threaded rod or pipe) together

Features:

Rugged and durable for indoor and outdoor use.
Suitable for communications, office equipment, electronics and other industries